



A+++

Energy - Saving Radiator

50% Energy Saving ✓
Consumption ✓

Environmentally Friendly



CaloEnergia Aluminum Radiator

CaloEnergia aluminum radiators are manufactured in first-class quality. Choose from different types and sizes. All models are made in an aesthetic and modern style and give rooms a certain architectural touch with their diverse design. We see radiators not only as heat generators but also as decorative elements that are brought into harmony with the overall room concept.

Our aluminum radiators have higher thermal energy savings and longer corrosion protection than standard radiators. Our radiators, which are manufactured according to European and ISO standards, have a 10-year guarantee.

CaloEnergia radiators are very easy to install with special brackets and can be easily integrated into existing heating systems.

Die Vorteile von CaloEnergia

Energy efficiency
Long lifetime
Elegant and modern design
Individual design according to customer requirements
Thermostatic control option

Compact valve option
Floor mounting function
Wide range of colors and designs
Easy-to-clean surfaces
Universal connections



We offer high-quality, long-lasting, UV-resistant color and motif prints.
Choose from numerous color and pattern options

H Valve Option



Floor Connection Option



Thermostatic Valve Option



Energy-Saving-Radiator

CaloEnergia energy-saving radiators work very efficiently thanks to the special heat conduction in the radiator. Our radiators heat up much faster than standard radiators and offer homogeneous heat radiation at every point on their surface.

Compared to standard radiators, CaloEnergia radiators require approx. 20 times less water thanks to special heat conductors inside the radiator. CaloEnergia radiators achieve energy savings of up to 50% by simultaneously emitting more heat with less water.

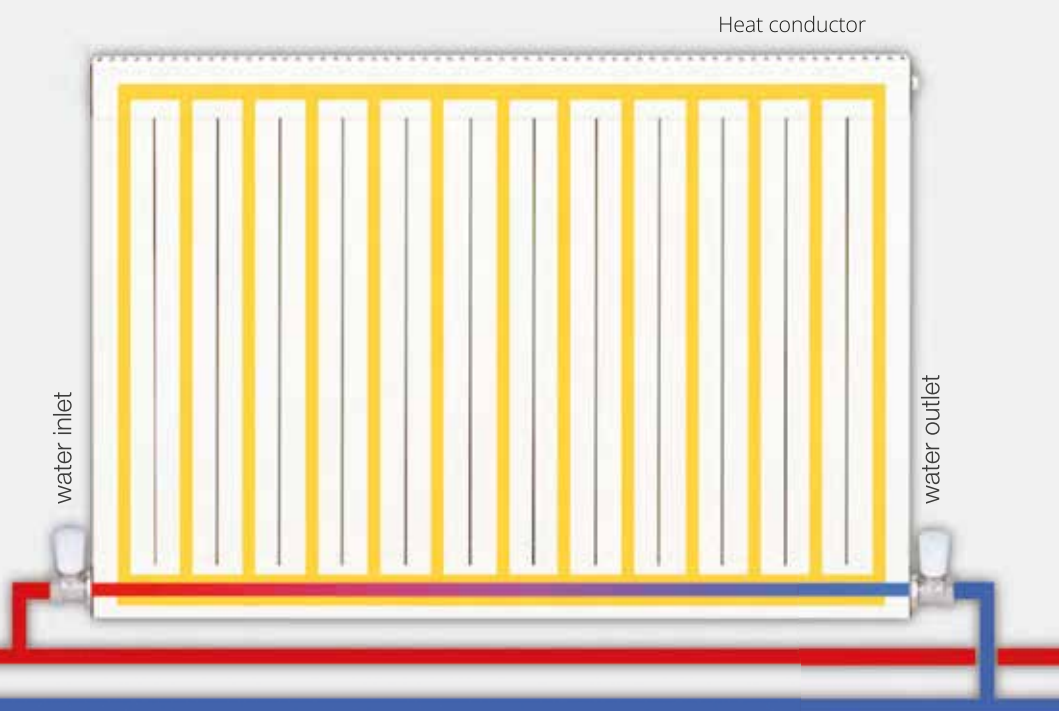
CaloEnergia energy-saving radiators can be used in all common hot water heating systems that are operated with gas/solid/liquid fuels or electrically. They offer a higher energy saving potential compared to conventional radiators.



Only a very small amount of hot water goes through the lower part of the radiator.

Thanks to the heat conductor, the entire radiator heats up quickly, evenly and with high efficiency.

The special heat conductor in the radiator plays the most important role in this energy saving process.



CaloECO



CaloECO Technical Data

Overall Height	Boss Spacing	Construction Depth	Section Width	Radiator Weight	Water Volume	Connection	Overall Length
mm	mm	mm	mm	kg/m	lt/m	Inch	mm
300	245	60	80	7.7	0.25	G 1/2"	400 - 3000
400	345	60	80	9.31	0.25	G 1/2"	400 - 3000
500	445	60	80	10.1	0.25	G 1/2"	400 - 3000
600	545	60	80	12.8	0.25	G 1/2"	400 - 3000
900	845	60	80	17.9	0.25	G 1/2"	400 - 3000

Technical changes reserved.



CaloECO thermal output in -W- according to DIN EN 442 at 70/55/20°C

Overall Height	300	400	500	600	900	550
Overall Length	Thermal output - in -W					
430	285	335	475	570	855	520
510	342	402	570	684	1026	624
590	399	469	665	798	1197	728
680	456	536	760	912	1368	832
760	513	603	855	1026	1539	936
930	627	737	1045	1254	1881	1144
1020	684	804	1140	1368	2052	1248
1100	741	871	1235	1482	2223	1352
1190	798	938	1330	1596	2394	1456
1270	855	1005	1425	1710	2565	1560
1350	912	1072	1520	1824	2736	1664
1520	1026	1206	1710	2052	3078	1872
1610	1083	1273	1805	2166	3249	1976
1690	1140	1340	1900	2280	3402	2080
1780	1197	1407	1995	2394	3591	2184
1860	1254	1474	2090	2508	3762	2288
2030	1368	1608	2280	2736	4104	2496
2200	1482	1742	2470	2964	4446	2704
2370	1596	1876	2660	3192	4788	2912
2620	1767	2077	2945	3534	5301	3224
2790	1881	2211	3135	3762	5643	3432
2960	1995	2345	3325	3990	5985	3640

Overall heights and Overall Lengths in -mm-

Our **CaloECO** radiator surpasses conventional plate radiators of type 11 and even type 21 in terms of its thermal output with comparable overall heights / lengths.

The **CaloECO** is approx. 1 - 3 mm smaller than type 11 and approx. 6 - 12 mm less than type 21. This means that with the same heat output of conventional panel radiators, the **CaloECO** radiators can be selected in smaller dimensions. At the same time, the **CaloECO** radiators save energy because they radiate more heat with the same dimensions as conventional panel radiators. The water volume in the **CaloECO** is reduced by up to twenty times (depending on the size) of conventional standard radiators.

The energy saving principle simply explained:

The less water has to be heated, the less energy is required. The combination of higher energy efficiency and lower water circulation leads to energy savings in our **CaloECO**. The new **CaloECO** is compatible with standard panel radiators and designed for universal use in hot water heating systems.



CaloPRO



CaloPRO Technical Data

Overall Height	Boss Spacing	Construction Depth	Section Width	Radiator Weight	Water Volume	Connection	Overall Length
mm	mm	mm	mm	kg/m	lt/m	Inch	mm
300	245	60	53	8.7	0.25	G 1/2"	400 - 3000
400	345	60	53	9.9	0.25	G 1/2"	400 - 3000
500	445	60	53	12.9	0.25	G 1/2"	400 - 3000
600	545	60	53	19.2	0.25	G 1/2"	400 - 3000
900	845	60	53	21.5	0.25	G 1/2"	400 - 3000

Technical changes reserved.



CaloPRO thermal output in -W- according to DIN EN 442 at 70/55/20°C

Height	300	400	500	600	900	550
Length						
390	301	399	504	602	903	553
510	387	513	648	774	1161	711
620	473	627	792	946	1419	869
670	516	684	864	1032	1548	948
790	602	798	1008	1204	1806	1106
900	688	912	1152	1376	2064	1264
1010	774	1026	1296	1548	2322	1422
1120	860	1140	1440	1720	2580	1580
1180	903	1197	1512	1806	2709	1659
1290	989	1311	1656	1978	2967	1817
1400	1075	1425	1800	2150	3225	1975
1510	1161	1539	1944	2322	3483	2133
1570	1204	1596	2016	2408	3612	2212
1680	1290	1710	2160	2580	3870	2370
1790	1376	1824	2304	2752	4128	2528
1910	1462	1938	2448	2924	4386	2686
2020	1548	2052	2592	3096	4644	2844
2190	1677	2223	2808	3354	5031	3081
2410	1849	2451	3096	3698	5547	3397
2580	1978	2622	3312	3956	5934	3634
2800	2150	2850	3600	4300	6450	3950
2970	2279	3021	3816	4558	6837	4187

Overall heights and Overall Lengths in -mm-

The **CaloPRO** type radiator has a depth that is 40 - 44 mm less than type 21 and approx. 6 - 12 mm less than type 21.

This means that with the same heat output of conventional panel radiators, the **CaloPRO** type radiators with smaller dimensions can be selected. At the same time, the **CaloPRO** type radiators save energy because they radiate more heat with the same dimensions as conventional panel radiators. The water volume in the **CaloPRO** is reduced by up to 20 times (depending on the size) of conventional standard radiators.

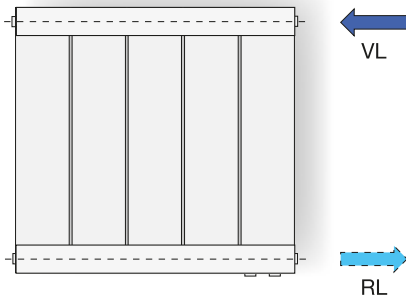
The energy saving principle simply explained:

The less water has to be heated, the less energy is required. The combination of higher energy efficiency and less water circulation leads to energy savings in our **CaloPRO**. The new **CaloPRO** is compatible with standard panel radiators and designed for universal use in hot water heating systems.

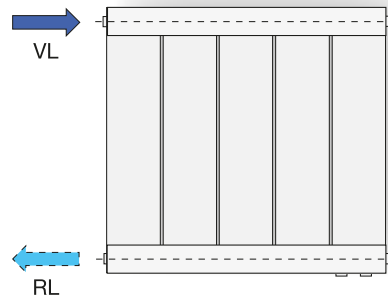


Connection options for hot water radiators:

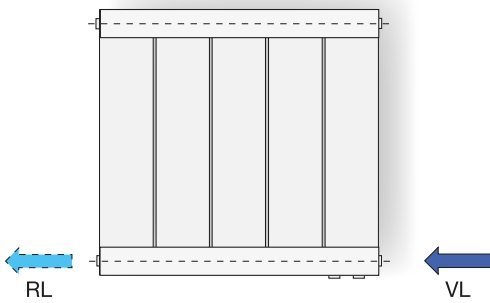
Connection same side



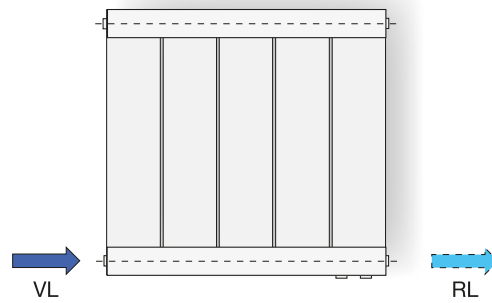
Connection same side



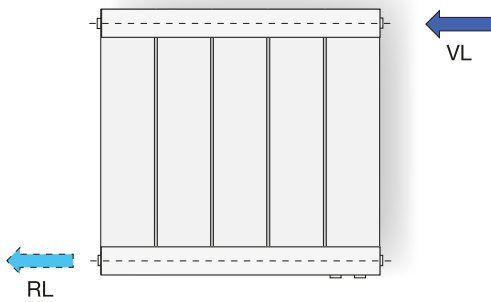
Bottom Opposite End Connection



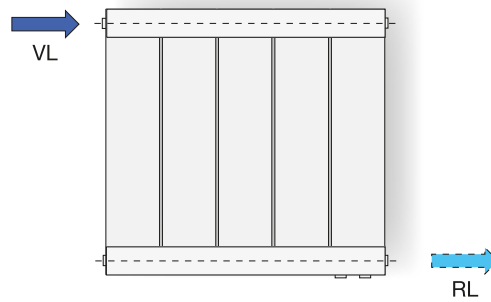
Bottom Opposite End Connection



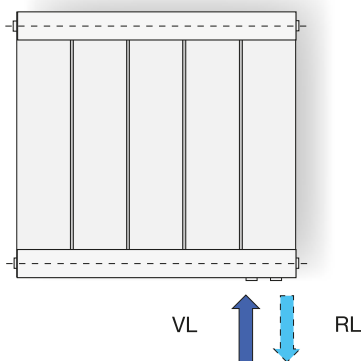
Bottom-Top Opposite End Connection



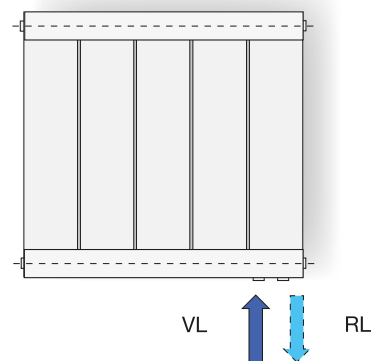
Bottom-Top Opposite End Connection



Connection at the bottom right



Connection at the bottom right



VL = Forward
VR = Backward

(Connection left)

Electrical, aesthetical and economical

CaloEnergia highly effective electric radiators work very efficiently with very little energy demand thanks to the special heat conductor inside.

They heat up much faster than conventional electric radiators and generate homogeneous heat radiation at every point on the heating surface.

Thanks to the heating technology from CaloEnergia, around a third less energy is required compared to radiators from other manufacturers with the same heating output.

- Choose from a variety of sizes, colors, patterns and UV-resistant color and motif prints. Our electric radiators are manufactured in two different models:
- Wall-mounted radiators.
- Mobile radiators with wheels.



Model	Overall Height	Overall Length	Overall Length	Installation Depth	Electrical Power	Electrical Voltage	Heating Surface
60/12 Sektion SE	600 mm	bis 1020 mm	80 mm	40 mm	1180 W	230 V	8-14 m ²
180/7 Sektion SE	1800 mm	bis 590 mm	80 mm	40 mm	1500 W	230 V	16-22 m ²

CaloEnergia Radiators At A Glance

- Elegant and efficient at the same time
- Design variety through color variants and surface prints
- Surface coatings are UV-resistant and scratch-resistant according to RAL, easy to clean
- Hygienic as it is made of aluminum
- Suitable for damp, wet environments as it is corrosion-resistant

Product Features Hot Water Radiators:

Boss spacing is compatible with most panel radiators. This means that no adaptation of existing pipelines is required.

The radiators can be rotated and can therefore be connected to the left or right.

Connection variants: Connection same side, bottom opposite end connection, bottom-top opposite end connection, connection bottom right / bottom left.

Connections 4 x G 1/2" or 6 x G1 / 2" heights 300 - 900 mm

Overall lengths 400 - 3000 mm.

10 bar max. operating pressure hot water, test

Pressure: 13 bar. 90 ° C max. Hot water temperature.

Thermal output according to EN 442.

Material: aluminum.

Standard painting: powder primer according to DIN 55900 burned in.

Burned-in powder top coat, color RAL 9016 standard white.

Special painting: Special prints:

Burned-in powder topcoat, color RAL according to color sample. Color motif prints according to the print sample on top powder coating.

Special prints are not suitable for damp or wet environments.

The heat output is more efficient due to the aluminum body material and the special heat transfer fluid inside the radiator as well as the reduced water volume.

Customer service and maintenance by the manufacturer or a licensed specialist company. The radiators are CE, TÜV, WTP and EuroLab tested or certified.

10 year guarantee, if used as intended use and in compliance with the warranty conditions.

Technical changes reserved.

Product Features Electric Radiators

Radiator connection on the right. Connections 230V / 50-60Hz IP protection class IP 44. Protection class IP 64 in special design. Room temperature control and surface temperature control of the radiator via thermostat and display. Power protection depending on the performance; FI protection required on site.

Overall heights 600mm, overall lengths (width) up to 1020 mm.

Overall heights 1800mm, overall lengths (width) up to 590 mm.

Surface temperature max. 60 ° C (Safety shutdown)

Heat output according to the heating elements used.

Material: Aluminum.

Standard painting: powder primer according to DIN 55900 burned in.

Burned-in powder topcoat, color RAL 9016

Special paint: color RAL 9016 standard white

Powder primer according to DIN 55900 burned-in.

Burned-in powder topcoat, color RAL according to color sample.

- 1- ERP defined
- 2- Adjustable heat control
- 3- Two independent NTC thermal sensors.
- 4- Radiator and room temperatures monitored simultaneously.
- 5- Sensitive to temperature variations of 0.5° C
- 6- Auto-shutdown protection if the radiator inclines from the vertical.
- 7- 24 hour, 7 day programmable.

On top powder coating, color / motif prints according to the print sample.

Special prints are not suitable for damp or wet environments.

The heat output is more efficient due to the aluminum body material and the special heat transfer fluid inside the radiator.

Customer service and maintenance by the manufacturer or a licensed specialist company. The radiators are CE, TÜV, WTP and EuroLab tested or certified.

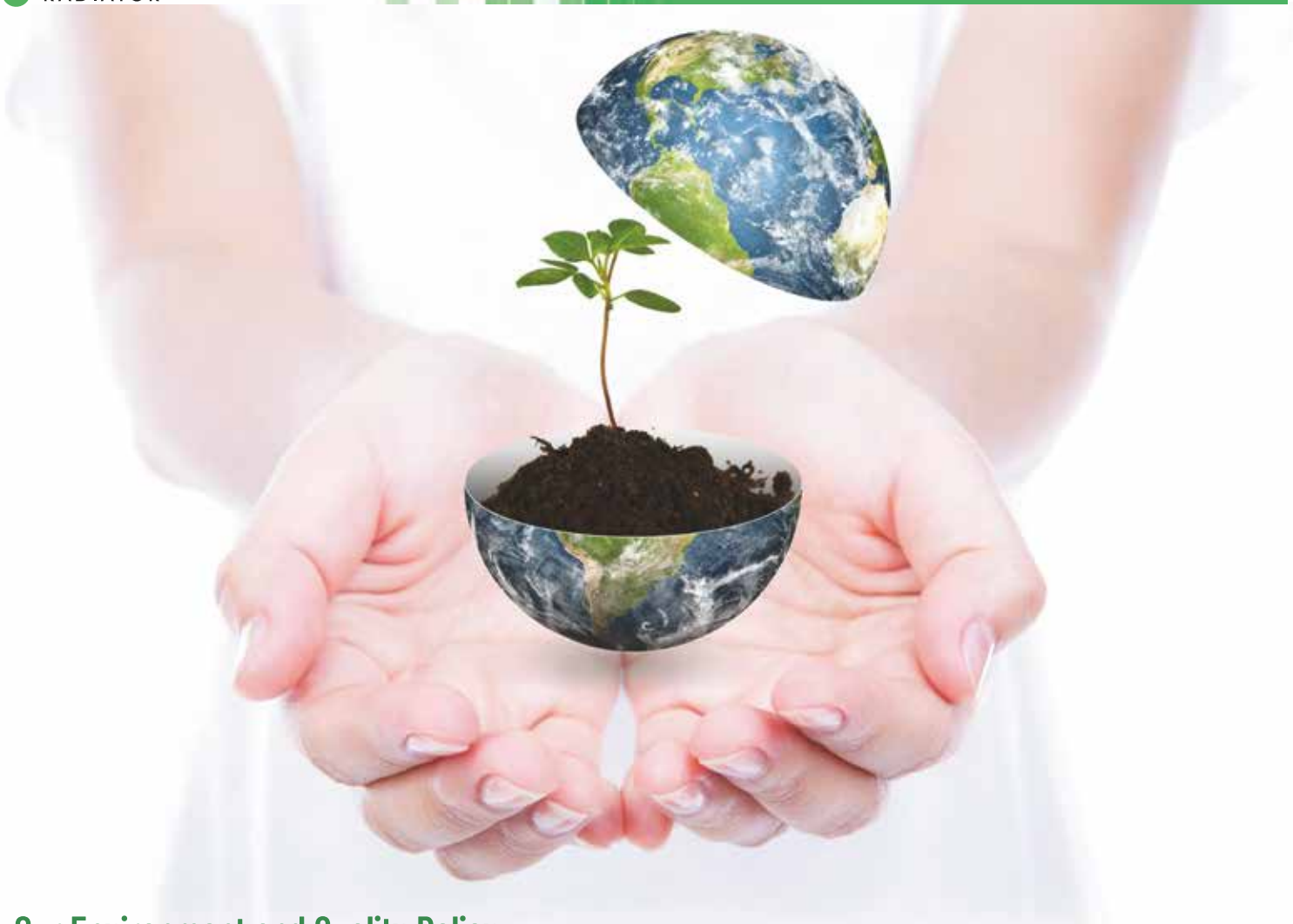
10 year guarantee on the body, if used as intended and in compliance with the guarantee conditions.

3 year guarantee on the electrics / electronics, if used as intended and the guarantee conditions.

Technical changes reserved.

Heating rods can be easily and problem-free exchanged by the manufacturer or a specialist company.

This product qualifies as 'ENERGY SAVING' according to the relevant European directives and standards.



Our Environment and Quality Policy

CaloEnergy energy-saving radiators have been certified that they are up to 50% more efficient than conventional radiators in a comparison test. Our radiators are designed as environmentally friendly products. The environmental friendliness of our products has been confirmed by tests carried out in accredited testing facilities. CaloEnergy manufactures products with CE and other quality certifications according to European standards. We will continue to develop our products in an innovative and cost-effective manner, which we are constantly improving beyond the scope of our standard production concept, taking quality and safety into account.

